



ANTI-DIVERSION TECHNOLOGIES

To meet the growing demand for technology to thwart diversion of beauty products during distribution and transportation to the end market, **MASON-GREY** personnel provided system design, development, programming, configuration, integration and start-up of a anti-diversion system incorporating proprietary 2D barcodes. The project incorporated the latest 2D barcode methods and symbology as well as a machine vision system for authentication. An integrated corner-wrap labeling application and servo controlled conveyors were controlled by a custom Visual Basic human-machine interface (HMI)

This system has also been configured to interact with a network allowing transfer of data to a tracking system.

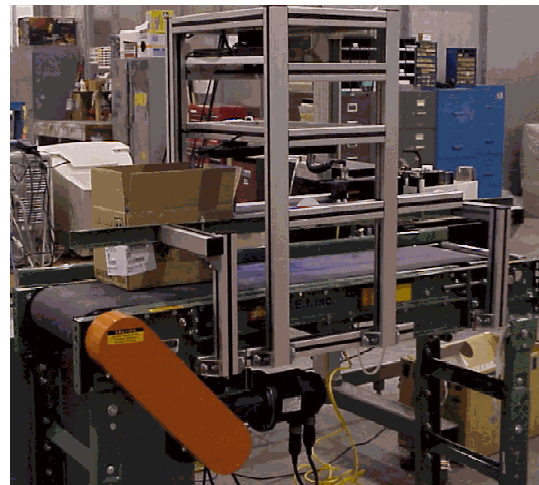


Figure 1. Anti-Diversion System Conveyor (during development)

OBJECTIVE

The goal was to provide a system to help reduce the diversion of products in the professional beauty products industry. The system developed applies a unique code on every bottle. This code is stored and tracked from the point of manufacture to the point of sale. The coding, scanning, and printing systems were integrated to allow for adjustment of different size beauty products. This tracking system was developed to be flexible, allowing for the same system to be used in other industries. The recipe driven setup allows for a user friendly human to machine interface, resulting in a reduction of human error.

Please Contact:

Mason-Grey Corporation
400 Galleria Parkway, Suite 1500
Atlanta GA 30339
PH: 678-385-7470
FX: 678-385-7471
Email: info@mason-grey.com
Web: www.mason-grey.com



Figure 2. Primary User Interface



Figure 3. Two Dimensional Barcode on product bottles.

SCOPE

MASON-GREY personnel provided complete System Design, Development, Programming, Integration and Installation including the following:

- System printed unique 2D Data Matrix codes on the product bottle.
- The integration provided for scanning, decoding, and storing of the code from the products that are in a shipping carton.
- Configuration of barcodes and data for labels and tracking system.
- Application of corner wrap label to the shipping carton.
- Printing of Automatic pallet label.
- Recipe driven Visual Basic application using Access Database to store data.
- System Installation / Start-up.

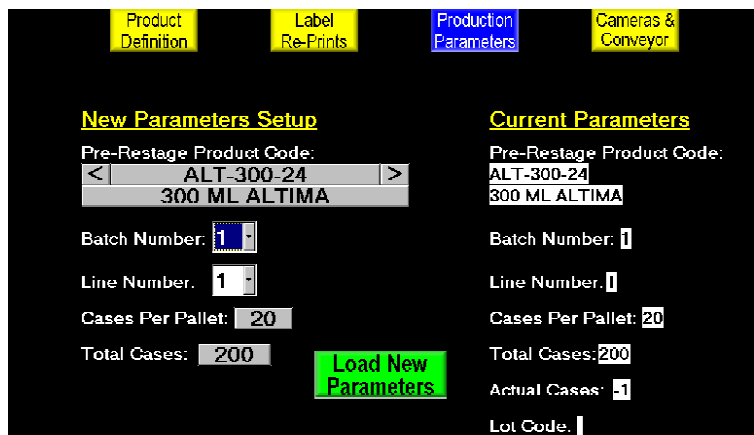


Figure 4. Screen View of Human Machine Interface.

THE REASONS THE PROJECT WAS A SUCCESS

- "Adaptable and flexible during the project... easy to work with"
- "Provided sound, innovative technical solutions to difficult problems"
- "Worked with problems and with the customer... did not turn away"
- "Created user friendly system that was easy to work with"
- "Achieved customers objectives"
- "Started up on time despite several obstacles"

Please Contact:

Mason-Grey Corporation
 400 Galleria Parkway, Suite 1500
 Atlanta GA 30339
 PH: 678-385-7470
 FX: 678-385-7471
 Email: info@mason-grey.com
 Web: www.mason-grey.com